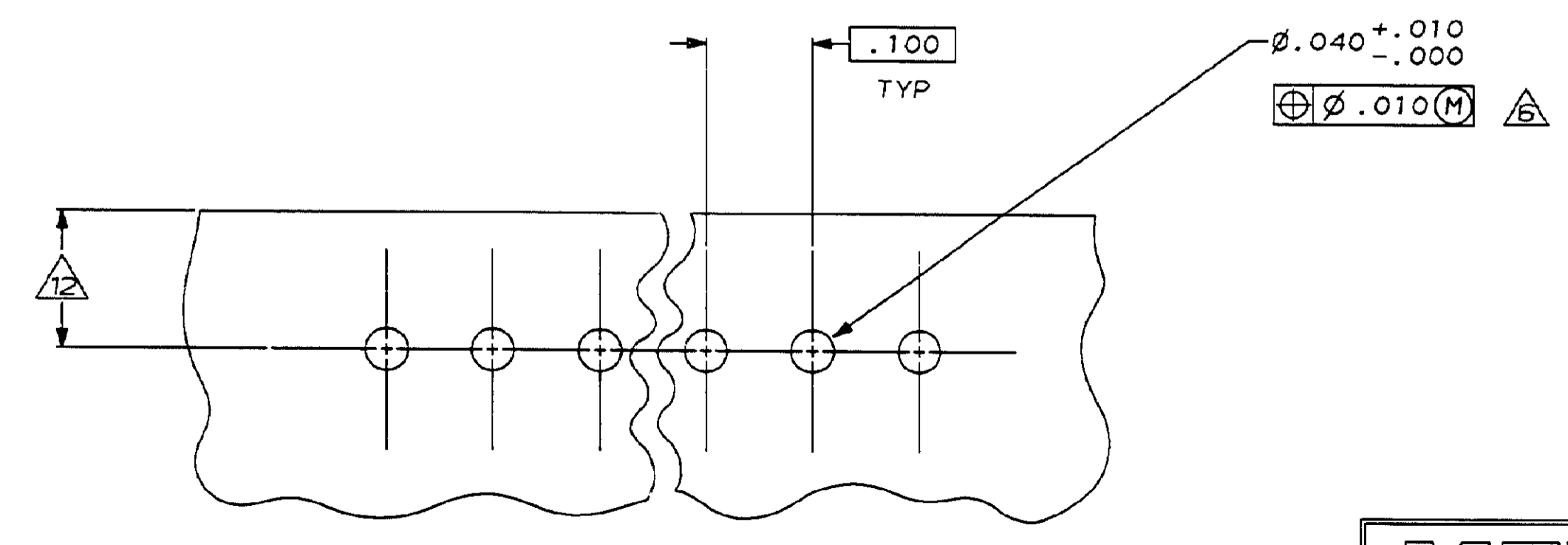
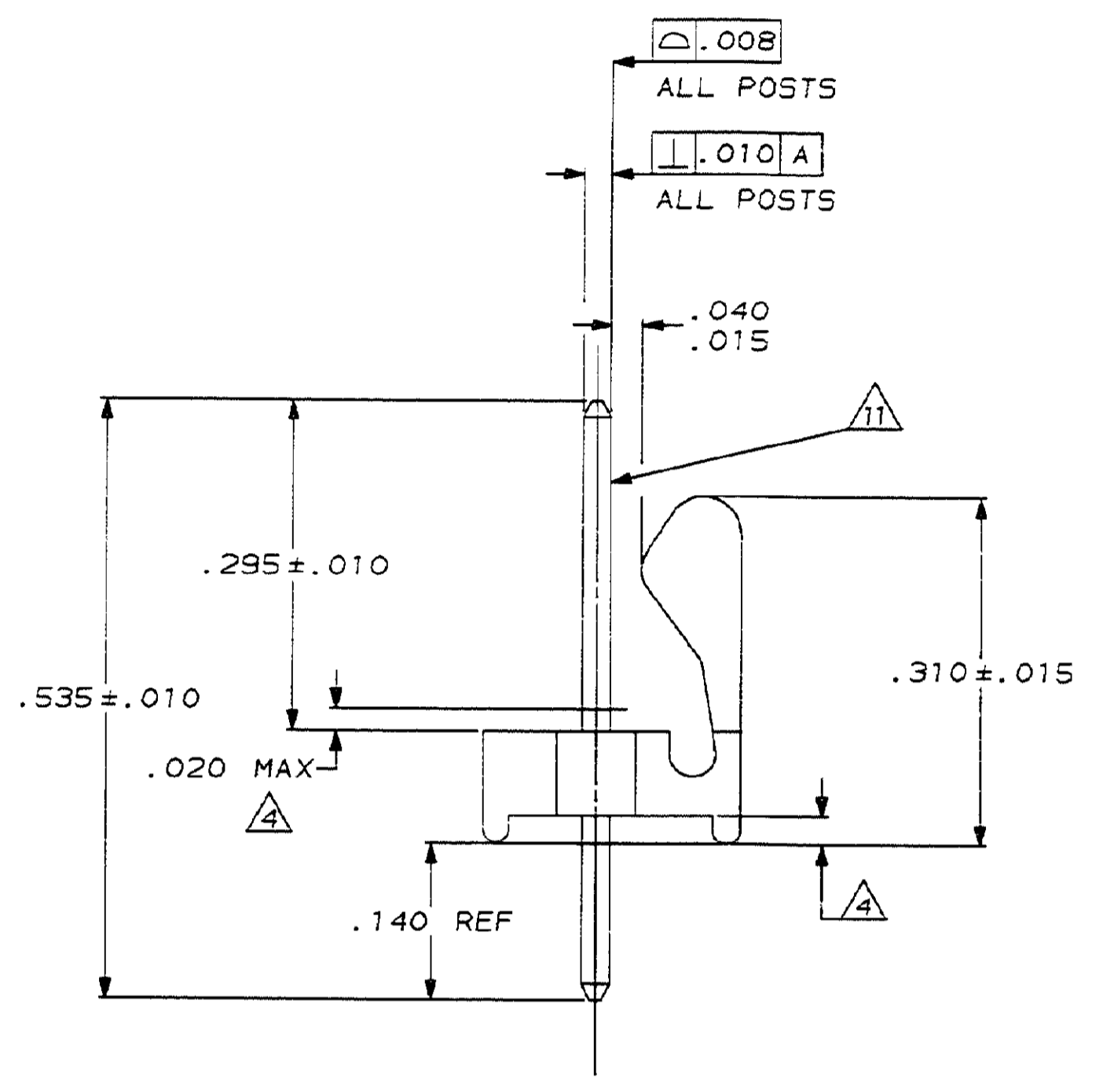
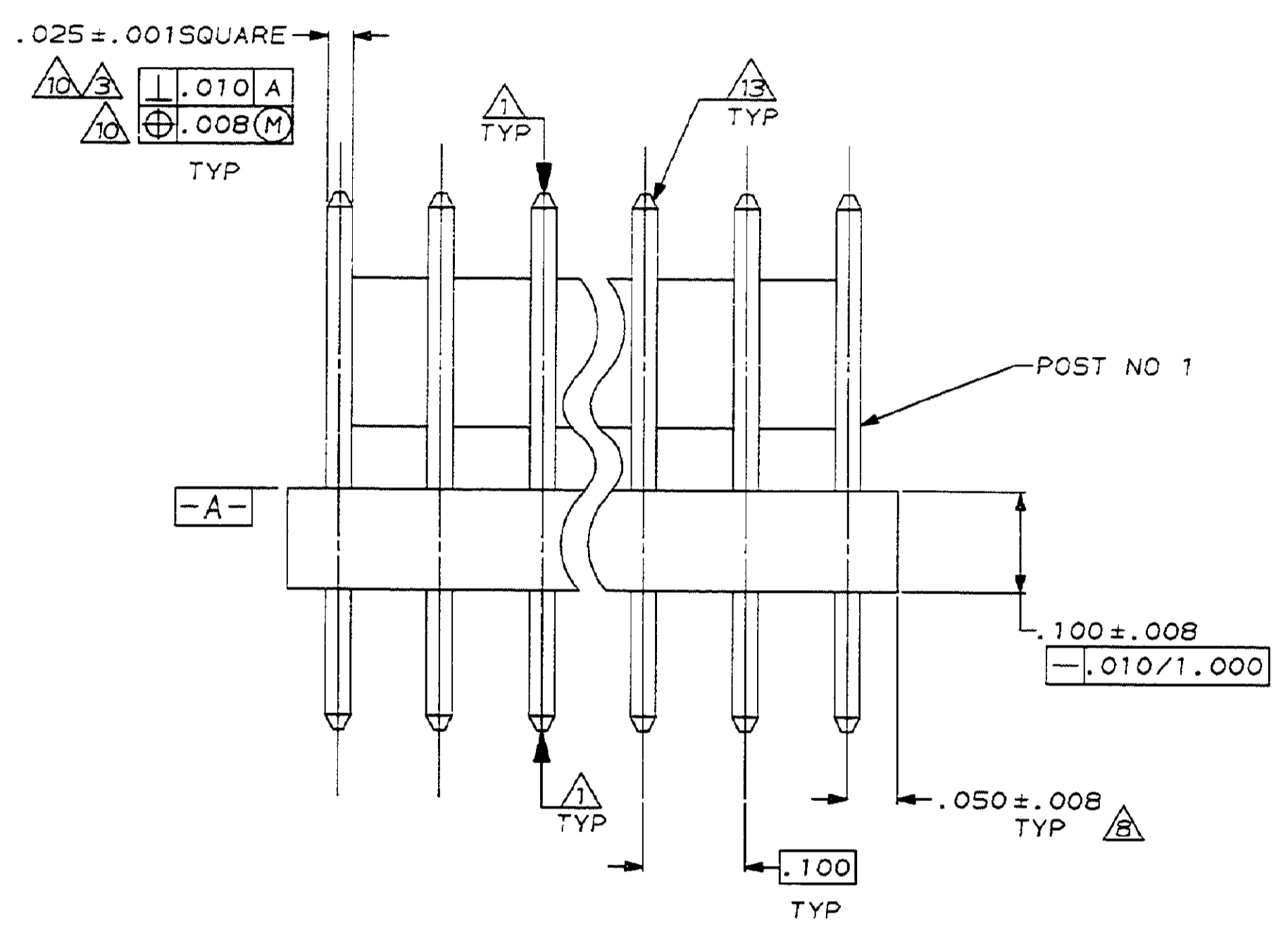
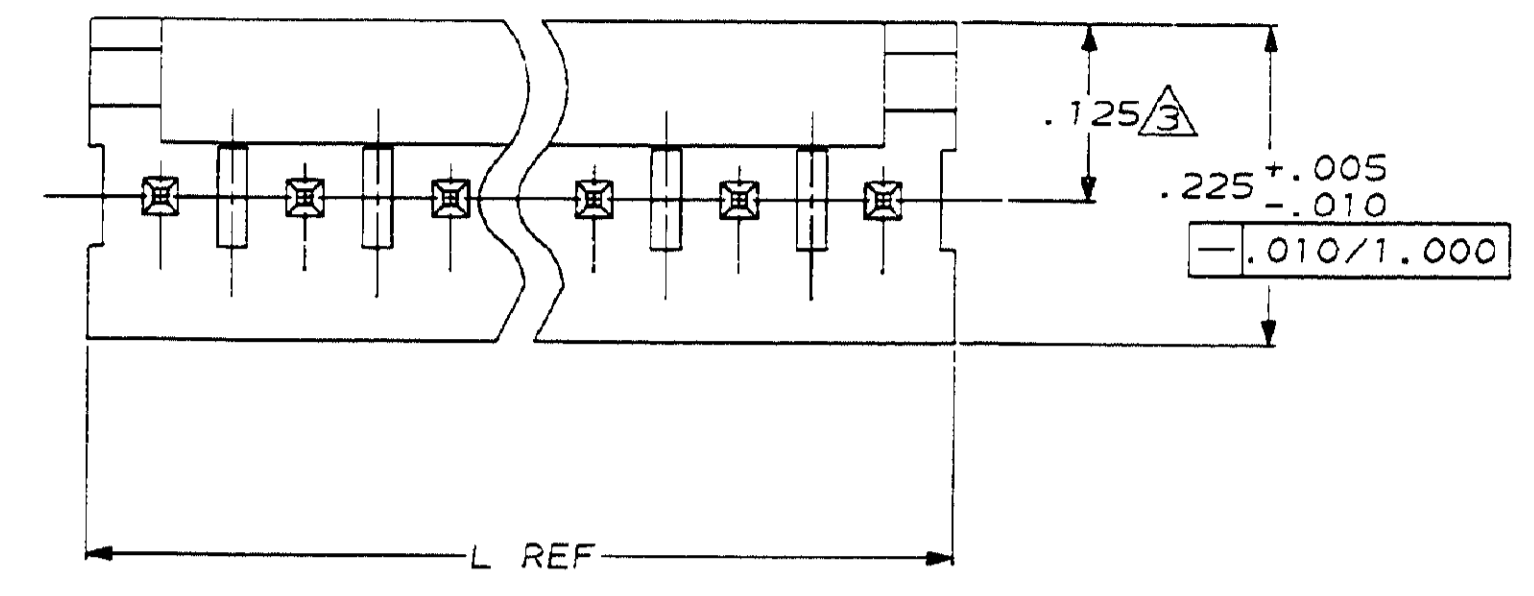


LOC		DIST		ZONE		LTR		REVISIONS		DATE	APPR
CM	54							C	SEE SHEET 1	3-17-93	BL/RS



RECOMMENDED MOUNTING HOLE PATTERN FOR .063 THICK P.C. BOARD

METRIC

THIS DRAWING IS A CONTROLLED DOCUMENT FOR AMP INCORPORATED. IT IS SUBJECT TO CHANGE AND THE CONTROLLING ENGINEERING ORGANIZATION SHOULD BE CONTACTED FOR THE LATEST REVISION.

DO NOT SCALE PRINT. UNLESS SPECIFIED DIMENSIONS IN mm (INCHES)		TOLERANCES ON:		FINISH		MATERIAL		PART NO	
2	PLC DEC ± .005	3	PLC DEC ± .005	ANGLES	± 0°30'	-	-	DR 3-17-93 B. LEWIS	CHK 3-17-93 R. SWING
APPD 4-15-93	R. SPEER	APPD 4-15-93	R. SPEER	PRODUCT SPEC	-	-	-	NAME	AMP Incorporated Harrisburg, PA 17105-3508
				APPLICATION SPEC	-	SIZE	D	MTA 100 HEADER ASSEMBLY, FRICTION LOCK, NOTCHED, .025 SQUARE STRAIGHT POST, TIN PLATED, TUBE LOADED	
WEIGHT	-	CAGE CODE	00779	DRAWING NO	C-644423	SCALE	8:1	SHEET	20F2

CUSTOMER DRAWING

AMP BUSINESS UNIT 3323 171-34 BARRY LEWIS